



US009414038B2

(12) **United States Patent**  
**Johar**

(10) **Patent No.:** **US 9,414,038 B2**

(45) **Date of Patent:** **Aug. 9, 2016**

(54) **CREATING TIME LAPSE VIDEO IN REAL-TIME**

(71) Applicant: **Amanjyot Singh Johar**, Fremont, CA (US)

(72) Inventor: **Amanjyot Singh Johar**, Fremont, CA (US)

(\* ) Notice: Subject to any disclaimer, the term of this patent is extended or adjusted under 35 U.S.C. 154(b) by 506 days.

(21) Appl. No.: **13/843,977**

(22) Filed: **Mar. 15, 2013**

(65) **Prior Publication Data**

US 2014/0105564 A1 Apr. 17, 2014

**Related U.S. Application Data**

(60) Provisional application No. 61/795,400, filed on Oct. 16, 2012.

(51) **Int. Cl.**

**H04N 5/77** (2006.01)

**H04N 9/79** (2006.01)

**H04N 5/915** (2006.01)

**H04N 5/76** (2006.01)

(52) **U.S. Cl.**

CPC ..... **H04N 9/79** (2013.01); **H04N 5/915** (2013.01); **H04N 5/76** (2013.01)

(58) **Field of Classification Search**

CPC ..... H04N 5/72; H04N 5/85; H04N 5/783; H04N 9/8042; G11B 27/105

USPC ..... 386/224, 241, 253, 326, 328, 337, 343, 386/357; 348/231.99

See application file for complete search history.

(56) **References Cited**

U.S. PATENT DOCUMENTS

6,571,050	B1 *	5/2003	Park	386/241
6,760,536	B1 *	7/2004	Amir	G11B 27/005 386/344
6,782,187	B1 *	8/2004	Jeon	386/328
7,203,620	B2 *	4/2007	Li	A63B 24/0003 702/181
7,694,320	B1 *	4/2010	Yeo	G06F 17/30843 715/716
8,020,183	B2 *	9/2011	Ferman	G06F 17/30017 709/223
2002/0039481	A1 *	4/2002	Jun	G11B 27/005 386/241
2002/0051010	A1 *	5/2002	Jun	G06F 17/30787 715/723
2005/0271357	A1 *	12/2005	Adler et al.	386/46
2005/0275716	A1 *	12/2005	Shingu	G06F 17/30056 348/14.13
2006/0236245	A1 *	10/2006	Agarwal et al.	715/716
2008/0232766	A1 *	9/2008	Van Quickelberge	386/68
2010/0104261	A1 *	4/2010	Liu	G11B 27/034 386/241
2011/0217019	A1 *	9/2011	Kamezawa	H04N 9/8042 386/224
2013/0129317	A1 *	5/2013	Moorer	H04N 21/23424 386/241
2013/0235234	A1 *	9/2013	Cucci et al.	348/231.99

\* cited by examiner

*Primary Examiner* — Thai Tran

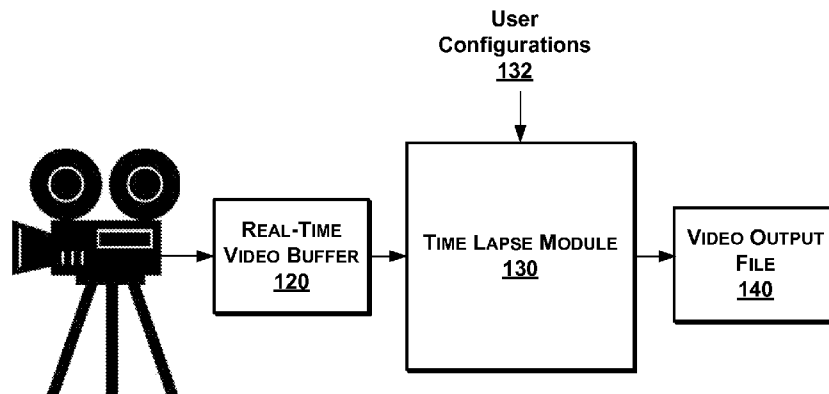
*Assistant Examiner* — Mishawn Hunter

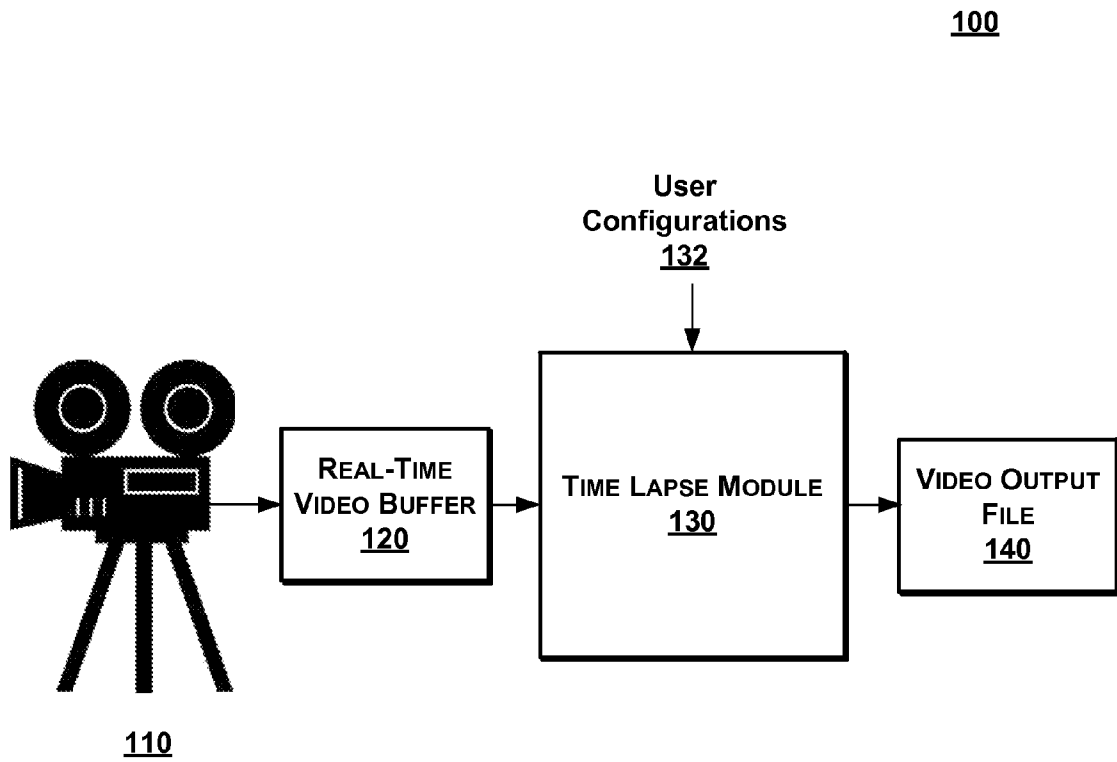
(57) **ABSTRACT**

A time lapse video is created in real-time, without post-production. User configurations are set for a time lapse video recording. A real-time video feed is received into a buffer. Based on a user configuration for frequency, certain frames in the buffer can be discarded prior to generating the video file. The time lapse video is output as a video file according to user configurations.

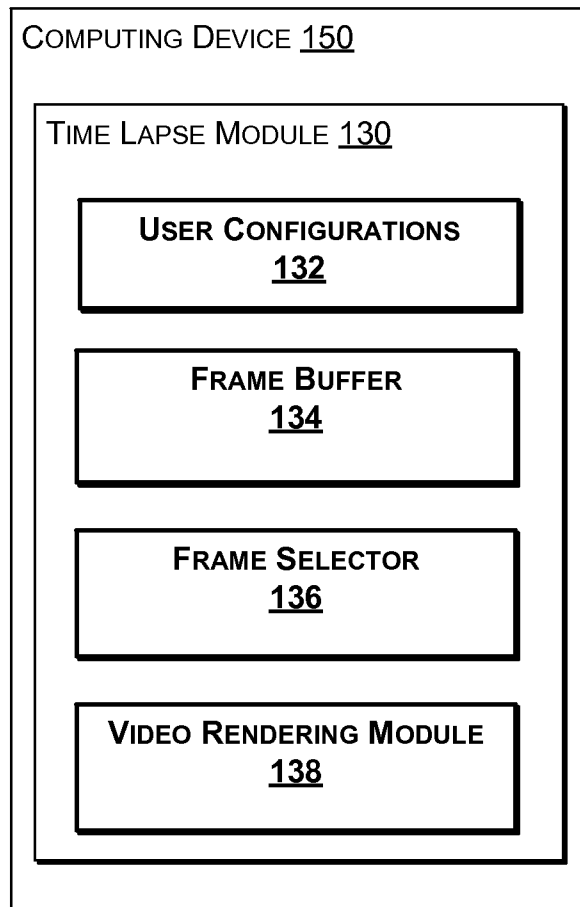
**12 Claims, 5 Drawing Sheets**

**100**



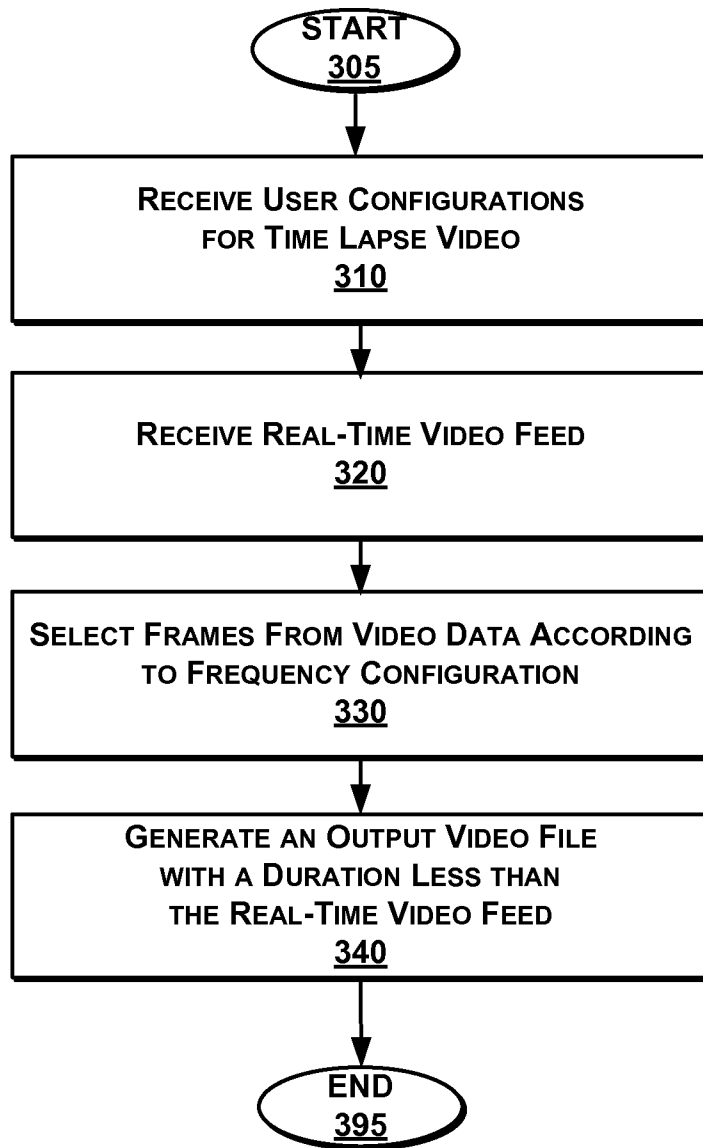


**FIG. 1**



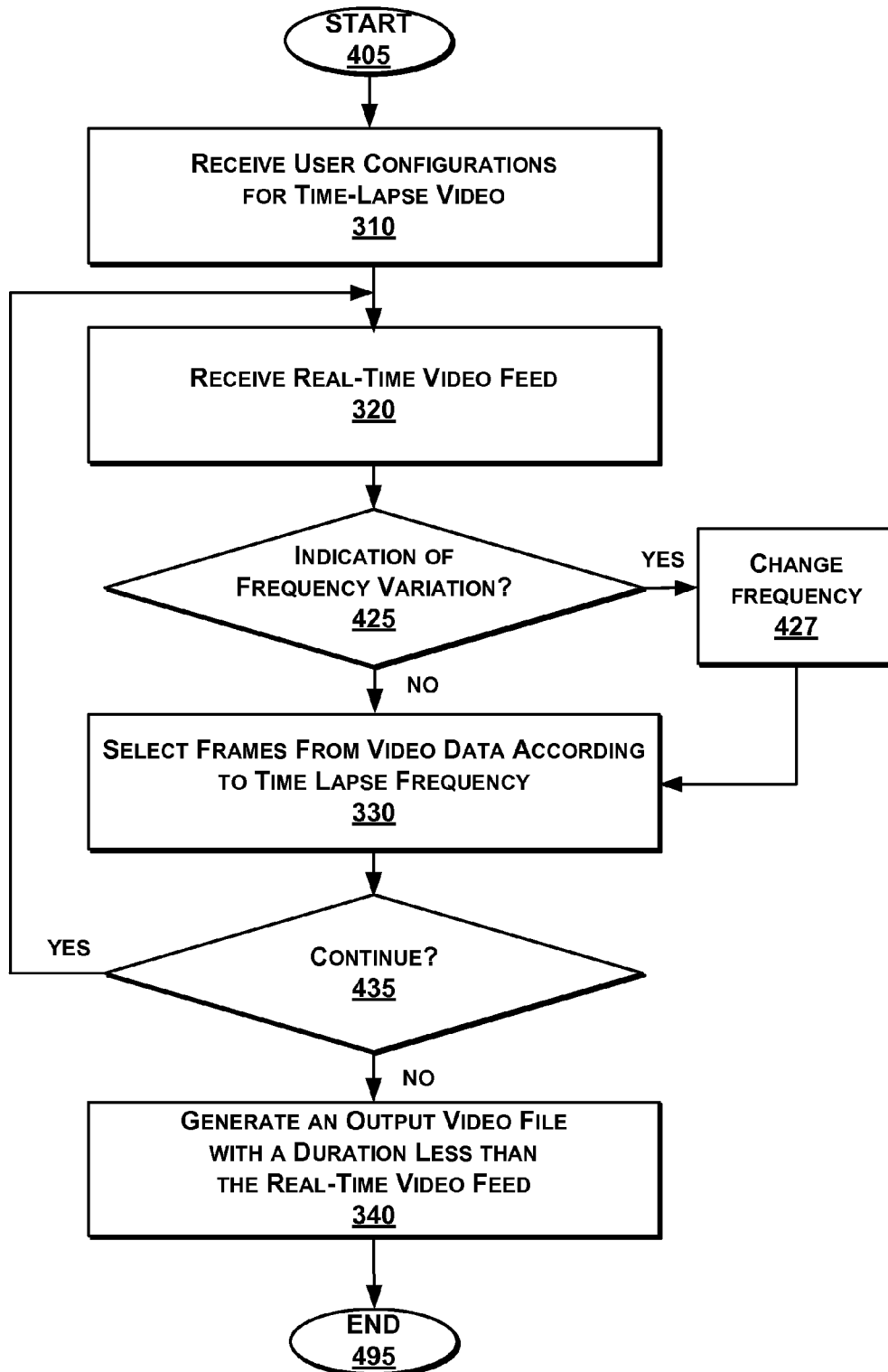
**FIG. 2**

300

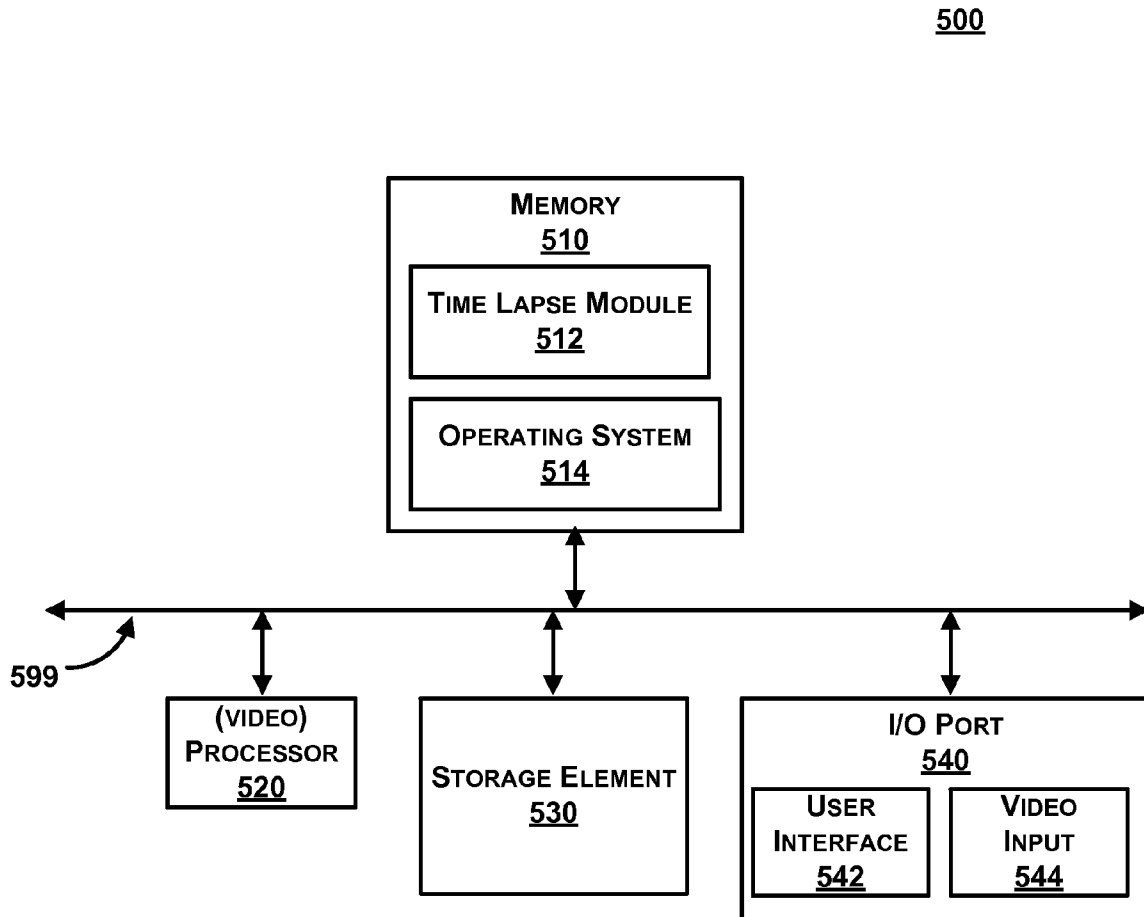


**FIG. 3**

400



**FIG. 4**



**FIG. 5**

1

## CREATING TIME LAPSE VIDEO IN REAL-TIME

### CROSS-REFERENCES TO RELATED APPLICATIONS

This application claims priority under 35 USC 120 to U.S. Pat. App. No. 61/795,400, entitled METHOD AND APPARATUS FOR CREATING A TIME LAPSE VIDEO, by Amanjot Johar, the contents of which are being hereby incorporated by reference in its entirety.

### FIELD OF THE INVENTION

The invention relates generally to digital video, and more specifically, to creating time lapse digital video in real-time.

### BACKGROUND OF THE INVENTION

Currently, video processing techniques are applied to raw footage that already exists. For example, an MPG video file is generated on a cell phone and is later edited on a desktop computer with a video editing software application. At that point in post-production, various techniques are applied to the video content and rendered as a new file. Some examples include processing the video in slow motion, adding footage from different tracks, changing the frame rate of playback to speed up or slow down the video etc.

Problematically, for both still photography and video the raw footage for creating time lapse videos consumes a lot of storage as raw footage is taken for hours or even weeks at a time. The problem is exasperated on devices that are limited in storage, such as a mobile device. Ironically, the same mobile devices have embedded still and video cameras with increasing resolutions including high-definition resolution and 3-dimensional capabilities. The resulting file size limits the duration of video that can be captured. After editing, the output file can be reduced to, for example, 1% or less of the raw footage file.

Moreover, the video editing software applications can be complex for users that just intend to capture video. Formatting between the capture device and the editing device has to be compatible. Furthermore, the additional cost is sometimes prohibitive.

What is needed is a technique for creating time-lapse video from still raw images or raw video footage in real-time, while overcoming the deficiencies of the prior art.

### SUMMARY

To meet the above-described needs, methods, computer program products, and systems for creating time lapse video in real-time.

In one embodiment, user configurations are set for a time lapse video recording. A real-time video feed is received into a buffer of a device. Based on a user configuration for the length of footage desired, the number or frequency of shots and/or frame rates, the device adapts itself to capture a video stream according to the specified parameters. To create the final time lapse video, certain frames in the buffer can be discarded prior to generating the video file. The time lapse video is output as a video file according to user configurations. No post production in a video editing software application is necessary.

In another embodiment, a real time feed from still camera images is received into a buffer. Based on user configuration for the length of footage desired, the number or frequency of

2

shots and/or the frame rates, the device can create a video stream from the raw still images. Since the frame rate of the still images will be substantially higher than the frame rate of a point and shoot or high end DSLRS available in the market today, the resulting video is free from the effects of jitters associated with such video production.

In another embodiment, the frequency adjusts the shutter speed of a video source. The resulting real-time video feed is received at the time lapse rate in this case.

In yet another embodiment, the frequency or frame rate or even the length of footage desired can be varied while a time lapse video is already being recorded. For example, the time lapse can be slowed down at certain points, and sped up at other points.

Advantageously, time lapse videos are generated on-the-fly to save storage space and post-production complexity.

### BRIEF DESCRIPTION OF THE DRAWINGS

In the following drawings, like reference numbers are used to refer to like elements. Although the following figures depict various examples of the invention, the invention is not limited to the examples depicted in the figures.

FIG. 1 is a high-level block diagram illustrating a system to create time lapse video in real-time, according to one embodiment.

FIG. 2 is a more detailed block diagram illustrating a time lapse module of FIG. 1, according to one embodiment.

FIG. 3 is a high-level flow diagram illustrating a method for creating time lapse video in real-time, according to one embodiment.

FIG. 4 is a flow diagram illustrating a method for varying the frequency of time lapse video, according to one embodiment.

FIG. 5 is a block diagram illustrating an exemplary computing device, according to one embodiment, according to one embodiment.

### DETAILED DESCRIPTION

The present invention provides methods, computer program products, and systems for creating real-time time lapse video. Generally, a time lapse video has a duration that is shorter than a duration of video capture. For example, a time lapse video of a 1-hour sunset can be condensed into a 1 minute video output file. Other video content can include surveillance video, blooming flowers, traffic patterns, or any other subject matter. Frames in the video output file can be played back at a faster rate than capture in order to shorten the duration.

#### Time Lapse Video Systems (FIGS. 1-2)

FIG. 1 is a high-level block diagram illustrating a system **100** to create time lapse video in real-time, according to one embodiment. The system **100** comprises a photographic or video source **110**, real time image or video buffer **120**, a time lapse module **130**, and a video output file. The data flow starts at the video source **110** which stores video data in the real-time video buffer **120** until the video data is processed by the time lapse module **130** into a video output file **140**.

The video source **110** can be any device capable of capturing real time video or still images of a subject. In other embodiments, the video source **110** can be a rendering engine that outputs frames. In some embodiments, the video source **110** can be integrated to a single device that generates time lapse videos. In other embodiments, the video source **110** can be wired, plugged-in, or remotely connected to the other components of the system **100**.

The real-time image or video buffer **120** can be a RAM memory or any other type of storage element. The real-time video buffer **120** receives video data from the video source. Video frames are generally received at a rate of 24, 25 or 30 frames per second, or any other appropriate rate. The rate may optionally be programmable by the user. The frames can be interlaced or progressive, standard or high definition resolution, and 2-dimensional or 3-dimensional. The frames can be stored temporarily until ready for processing. The frames can be raw, uncompressed video frames, or compressed video. Video and images may occupy more memory than the available RAM memory. Persons skilled in the art may recognize that in such cases the images and videos may temporarily be stored in the main memory until ready for processing.

The time lapse module **130** applies user configurations to the real-time video. In one embodiment, the frequency parameter is applied to frames captured into the real-time video buffer **120**. For example, if the time lapse is 2× normal video speed, every other frame can be selected for the video output file **140**. In another embodiment, the frequency parameter is applied to the video source **110** by adjusting the shutter speed. Consequentially, frames are generated at the time lapse video speed. In yet another embodiment, a user may be able to specify the frame rate desired or the length of the footage desired. Additional embodiments of the time lapse module **130** are described below with respect to FIG. 2.

The video output file **140** includes a time lapse video resulting from the video processing. The video output file **140** can be of any format, compressed or uncompressed, lossy or lossless. Exemplary formats include MPG, AVI, WMV, MOV, MP4, or any other suitable format.

FIG. 2 is a more detailed block diagram illustrating a time lapse module **130** of FIG. 1, according to one embodiment. The time lapse module can be implemented in a computing device **150**, such as a cell telephone, a tablet computing device, a digital handheld camera, a time lapse video device, or any other suitable computing device as described below in association with FIG. 5. The time lapse module **130** further comprises user configurations **132**, a frame selector **134**, and a video compression module **136**.

The user configurations **132** can be a set of parameters for the time lapse video stored in a memory location. The particular user configurations are specific to an implementation. Exemplary user configurations **131** include a frequency of time lapse video relative to real-time video, a duration of output video, a duration of input video, the desired frame rate while shooting the video, the desired frame rate for video playback and the like. The frequency parameter can be applied to a shutter on the camera, or to buffered frames, as describe below. In one embodiment, the user configurations **131** can be received through a user interface such as a touch screen or pointer. In another embodiment, the user configurations **131** can be set by physical buttons, switches, or dials.

The frame selector **134** determines which frames to use and which to discard from the real-time video feed, based on the set of parameters corresponding to the user configurations described above.

The frame buffer **136** can be a cache or other fast memory element to store frames being processed. Several frames are stored when implementing temporal compression algorithms such as MPG.

The video rendering module **138** renders the video output file **140** according to pre-configured settings. The settings can include a type of format, a resolution, and other settings. Video rendering can also include compression of the video to reduce the size of the video output file **140**. Some embodiments include hardware accelerators for rendering tasks.

Time Lapse Video Methods (FIGS. 3-4)

FIG. 3 is a high-level flow diagram illustrating a method **300** for creating time lapse video in real-time, according to one embodiment. The method **300** can be implemented, in one embodiment, using the system **100** of FIG. 1. Moreover, the method **300** can be implemented in software, hardware, or a combination of both. The method **300** can be automatically performed (once initialized) without human intervention.

At step **310**, user configurations for time lapse video are received. The user configurations can be set through a user interface or a physical setting. There can be pre-configured frequencies for selection (e.g., 2×, 4×, or 100×), or an input box to type in an exact selection. There can be additional preconfigured options for the desired input or output frame rate, the length of the desired footage or the frequency of shots, or there may be an additional input box to type in an exact desired selection.

At step **320**, a real-time video feed is received. The video is received either at intervals determined by the frequency, or at regular frequency over the configured duration, or based on the user configurations. Also, natural events such as power loss or memory capacity being reached can prematurely stop the real-time video feed.

At step **330**, frames from video data are selected according to time lapse parameters. Frames are discarded based on the frequency setting. Alternatively, no frames may be discarded and instead the frame rate of the output video is increased manifold to preserve the granularity of the events recorded. In such a scenario, the size of the output video may not be much smaller than the input stream captured.

At step **340**, an output video file with a duration less than the real-time video feed is generated. The output video file can be displayed on a video player at the reduced duration. The output video file can also be further processed, for example, in a video editing software application. It may be understood by one skilled in the art that based on the user configurations of frame rates and frequency, the length of the output video may sometimes exceed that of the real-time video feed. In such cases the invention behaves as a slow motion capture device.

FIG. 4 is a flow diagram illustrating a method for varying the frequency of time lapse video, according to one embodiment.

At step **310**, user configurations for time lapse video are received. At step **320**, a real-time video feed is received. These steps can be similar to the identically-numbered steps of the method **300** of FIG. 3 described above.

At step **425**, if an indication of frequency variation is detected, at step **427**, the frequency setting is changed. The frequency can be permanently varied, or temporarily varied by a user. For example, a sporting event that is time lapsed speeds up the event, but a user may desire to slow down certain parts over the duration. In one case, when the winner of a fight is declared, the user can press a button which slows down the time lapsing by a default such a half. As a result, if the time lapse was recording at 4×, the temporary slowdown at half speed would change the recording to 2× temporarily while the slowdown button is pushed.

On the other hand, at step **425**, if an indication of frequency variation is not detected, at step **330**, frames are selected from video data according to an existing time lapse frequency. The operation is normal.

At step **340**, an output video file with a duration less than the real-time video feed is generated, as discussed above. One of ordinary skill in the art will recognize that, given the disclosure herein, that many other embodiments are possible. In an embodiment, the device can be equipped with a Graphi-



cal User Interface that allows the user to manipulate the frequency, frame rate, length of footage desired etc. without interfering with the underlying hardware settings. The GUI automatically adjusts these hardware settings for the user.

In one embodiment, if the device is capable of being connected to the internet, the resulting videos thus generated can be stored in the cloud database of a service provider.

In another embodiment, the device may be equipped with a GPS that allows the user to store the location information where the video was shot.

In yet another embodiment, the device may be equipped with networking hardware that can connect the device to a local Wi-Fi hub, or the cellular network to allow access to the internet.

In still another embodiment, the device may be equipped with a GUI that allows the user to upload the videos so created to various social networks such as Facebook, Twitter etc.

In an alternative embodiment, voice and audio data may be overlaid with the time lapse video overlaid to form a complete multimedia experience. The user can also insert captions, title and other text elements and overlay them with the video.

In another embodiment, the user may be able to provide modules for embedding network content such as information based on the location of the video being shot or advertisements based on the content or the location of the video.

Exemplary Computing Device (FIG. 5)

FIG. 5 is a block diagram illustrating an exemplary computing device **500** for use in the system **100** of FIG. 1, according to one embodiment.

The computing device **500**, of the present embodiment, includes a memory **510**, a processor **520**, a storage drive **530**, and an I/O port **540**. Each of the components is coupled for electronic communication via a bus **599**. Communication can be digital and/or analog, and use any suitable protocol.

The memory **510** further comprises a time lapse module **512** (as described above) and an operating system **514**. Other modules stored in memory can include a web browser application, a web-browser-based application, a mobile application, a streamed application, a locally-installed application, and the like.

The operating system **514** can be one of the Microsoft Windows® family of operating systems (e.g., Windows 2000, Windows XP, Windows XP x64 Edition, Windows Vista, Windows 7, Windows 8, Windows CE, Windows Mobile), Linux, HP-UX, UNIX, Sun OS, Solaris, Mac OS X, Alpha OS, AIX, IRIX32, IRIX64, iOS, Android etc. Other operating systems may be used. Microsoft Windows is a trademark of Microsoft Corporation.

The processor **520** can be a video processor, a general purpose processor, an application-specific integrated circuit (ASIC), a field programmable gate array (FPGA), a reduced instruction set controller (RISC) processor, an integrated circuit, a Digital Signal Processor (DSP) or the like. A video processor can be optimized for repeated operations. The processor **520** can be single core, multiple core, or include more than one processing elements. The processor **520** can be disposed on silicon or any other suitable material. The processor **520** can receive and execute instructions and data stored in the memory **510** or the storage drive **530**. In addition the processor may also be capable of running a virtual machine for exclusively running the video editing software.

The storage drive **530** can be any non-volatile type of storage such as a magnetic disc, EEPROM, Flash, or the like. The storage drive **730** stores code and data for applications.

The I/O port **540** further comprises a user interface **642** and a video input **544**. The user interface **442** can output to a

display device and receive input from, for example, a keyboard. The video input **544** can be a video source or an input such as a video plug.

Many of the functionalities described herein can be implemented with computer software, computer hardware, computer firmware, or a combination.

Computer software products (e.g., non-transitory computer products storing source code) may be written in any of various suitable programming languages, such as C, C++, C#, Java, JavaScript, PHP, Python, Perl, Ruby, AJAX or HTML5 etc. The computer software product may be an independent application with data input and data display modules. Alternatively, the computer software products may be classes that are instantiated as distributed objects. The computer software products may also be component software such as Java Beans (from Sun Microsystems) or Enterprise Java Beans (EJB from Sun Microsystems).

Furthermore, the computer that is running the previously mentioned computer software may be connected to a network and may interface to other computers using this network. The network may be on an intranet or the Internet, among others. The network may be a wired network (e.g., using copper), telephone network, packet network, an optical network (e.g., using optical fiber), or a wireless network, or any combination of these. For example, data and other information may be passed between the computer and components (or steps) of a system of the invention using a wireless network using a protocol such as Bluetooth, LTE, Wi-Fi (IEEE standards 802.11, 802.11a, 802.11b, 802.11e, 802.11g, 802.11i, and 802.11n, just to name a few examples). For example, signals from a computer may be transferred, at least in part, wirelessly to components or other computers.

In an embodiment, with a Web browser executing on a computer workstation system, a user accesses a system on the World Wide Web (WWW) through a network such as the Internet. The Web browser is used to download web pages or other content in various formats including HTML, XML, text, JAVA applets, PDF, and postscript, and may be used to upload information to other parts of the system. The Web browser may use uniform resource identifiers (URLs) to identify resources on the Web and hypertext transfer protocol (HTTP) in transferring files on the Web.

This description of the invention has been presented for the purposes of illustration and description. It is not intended to be exhaustive or to limit the invention to the precise form described, and many modifications and variations are possible in light of the teaching above. The embodiments were chosen and described in order to best explain the principles of the invention and its practical applications. This description will enable others skilled in the art to best utilize and practice the invention in various embodiments and with various modifications as are suited to a particular use. The scope of the invention is defined by the following claims.

I claim:

1. A computer-implemented method for creating time lapse video in real-time, comprising:
  - receiving one or more user configurations related to time lapse video;
  - receiving a real-time video feed;
  - generating frames according to the one or more user configurations; and
  - outputting a time lapse video file, wherein the duration of the time lapse video file is less than the duration of the real-time video feed;
  - varying a frequency of input with respect to real-time for the real-time video feed,

7

wherein generating frames according to the one or more user configurations is varied contemporaneously with the varied frequency, and

wherein the time-lapse video file is output with more than one frequency of input relative to real-time.

2. The method of claim 1, wherein the one more user configurations comprise at least one of: frequency of input relative to real-time, duration of input, and duration of output.

3. The method of claim 1, wherein generating frames according to one or more user configurations comprises:

buffering frames of the real-time video feed; and selecting buffered frames according to a frequency set by the one or more user configurations, and

wherein outputting the time-lapse video file comprises outputting the selected buffered frames.

4. The method of claim 3, wherein the real-time video feed comprises 24, 25 or 30 frames per second of video content.

5. The method of claim 1, wherein generating frames according to one or more user configurations comprises:

buffering frames of the real-time video feed according to a frequency set by the one or more user configurations, and

wherein outputting the time-lapse video file comprises outputting the buffered frames.

6. The method of claim 1, further comprising: receiving an indication of cancelling the frequency variation,

wherein the time-lapse video file is output without the varied frequency.

7. A non-transitory computer-readable medium storing source code that, when executed by a processor, performs a method for creating time lapse video in real-time, the method comprising:

receiving one or more user configurations related to time lapse video;

receiving a real-time video feed;

generating frames according to the one or more user configurations; and

8

outputting a time lapse video file, wherein the duration of the time lapse video file is less than the duration of the real-time video feed;

varying a frequency of input with respect to real-time for the real-time video feed,

wherein generating frames according to the one or more user configurations is varied contemporaneously with the varied frequency, and

wherein the time-lapse video file is output with more than one frequency of input relative to real-time.

8. The computer-readable medium of claim 7, wherein the one more user configurations comprise at least one of: frequency of input relative to real-time, duration of input, and duration of output.

9. The computer-readable medium of claim 7, wherein generating frames according to one or more user configurations comprises:

buffering frames of the real-time video feed; and selecting buffered frames according to a frequency set by the one or more user configurations, and

wherein outputting the time-lapse video file comprises outputting the selected buffered frames.

10. The computer-readable medium of claim 9, wherein the real-time video feed comprises 24, 25 or 30 frames per second of video content.

11. The computer-readable medium of claim 7, wherein generating frames according to one or more user configurations comprises:

buffering frames of the real-time video feed according to a frequency set by the one or more user configurations, and

wherein outputting the time-lapse video file comprises outputting the buffered frames.

12. The computer-readable medium of claim 7, further comprising:

receiving an indication of cancelling the frequency variation,

wherein the time-lapse video file is output without the varied frequency.

\* \* \* \* \*